

# Tb-Ti (Terbium-Titanium)

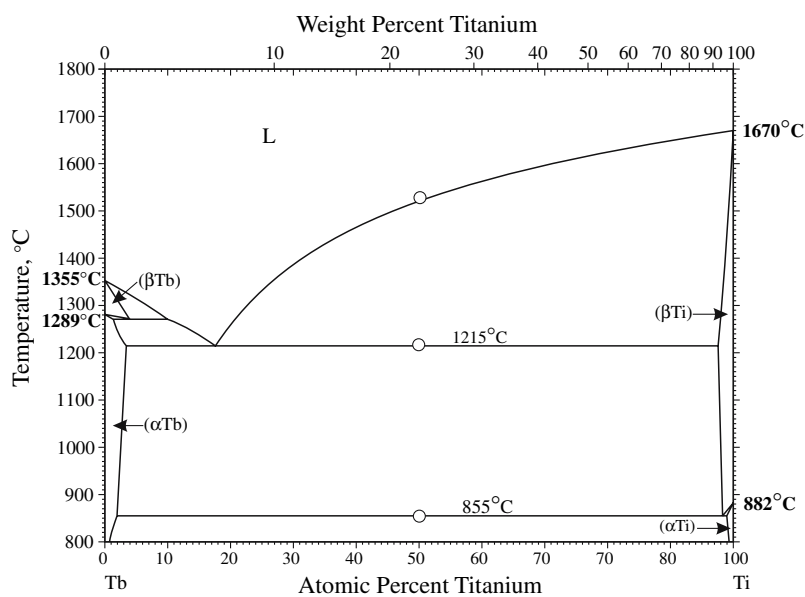
H. Okamoto

The Tb-Ti phase diagram in [Massalski2] was schematic.

The eutectic type shape of the phase diagram was confirmed by [2005Ted]. They determined the phase boundaries at 50 at.% Ti by means of DTA and proposed a revised phase diagram (Fig. 1). Because of the scarcity of data points, the phase diagram may need further improvement, but this phase diagram is certainly more reliable than that given in [Massalski2].

## Reference

**2005Ted:** J.C. Tedenac, M.I. Ivanov, M.V. Vulcanova, and V.V. Berezutski, Thermochemistry of Binary Liquid Gd-Ti and Tb-Ti Alloys, *J. Alloys Compd.*, 2005, **396**, p L1-L3



**Fig. 1** Tb-Ti phase diagram